

**Common name:**

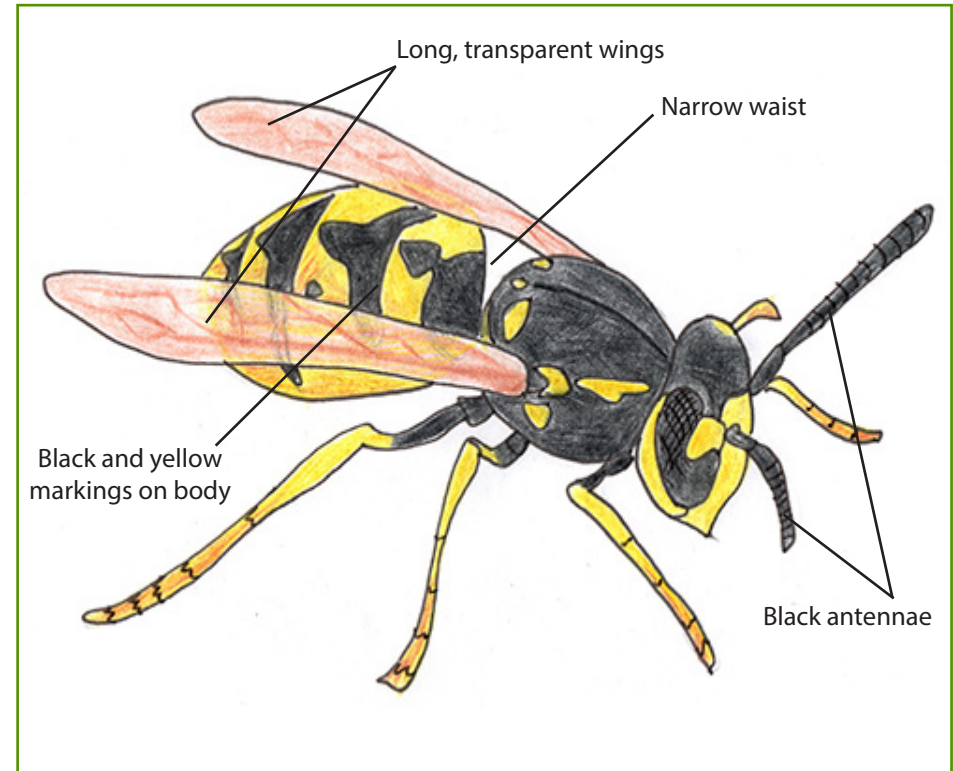
**Scientific name:**

Insert an image of the animal with labels to help describe identifying features

Information about habitat, phenophases, behaviour and call (if relevant), and distribution.

**Common name:** European wasp

**Scientific name:** *Vespula germanica*



The European wasp is native to Europe, Northern Africa, and temperate Asia, but has been introduced to Australia, and can now be found in the wetter and cooler areas of southern Australia. It is about 13 mm long, and has typical wasp colours of black and yellow. They feed on native arthropods. Nests are built in spring and are made from chewed plant fibres, mixed with saliva. The majority of nests are found in the soil below ground. Worker wasps are typically seen from late spring through to autumn, with mating occurring in autumn.



**ClimateWatch**  
An initiative of Earthwatch Institute



**coolaustralia.org**  
Learn for life